



SWEDISH FIRST HILL MEDICAL CENTER

SDC - SKYBRIDGE BRIEFING

03 MARCH 2016

PERKINS+WILL | SiteWorkshop

SEATTLE DESIGN COMMISSION

SKYBRIDGE REVIEW MERIT

As part of its review and recommendations, the Commission first considers the merit of installing the existing skybridge. For new skybridges, the Commission considers the following standards found in SMC 15.64:

- Adequacy of horizontal and vertical clearance
- View blockage
- Interruption or interference with existing streetscape or other street amenities
- Impacts due to reduction of natural light
- Reduction of and effect on pedestrian activity at street level
- Number of pedestrians that use the skybridge
- Effect on commerce and enjoyment of neighboring land uses
- Availability of reasonable alternatives
- Effect on traffic and pedestrian safety
- Accessibility for the elderly and handicapped

CONTENTS

INTRODUCTION

NEIGHBORHOOD CONTEXT

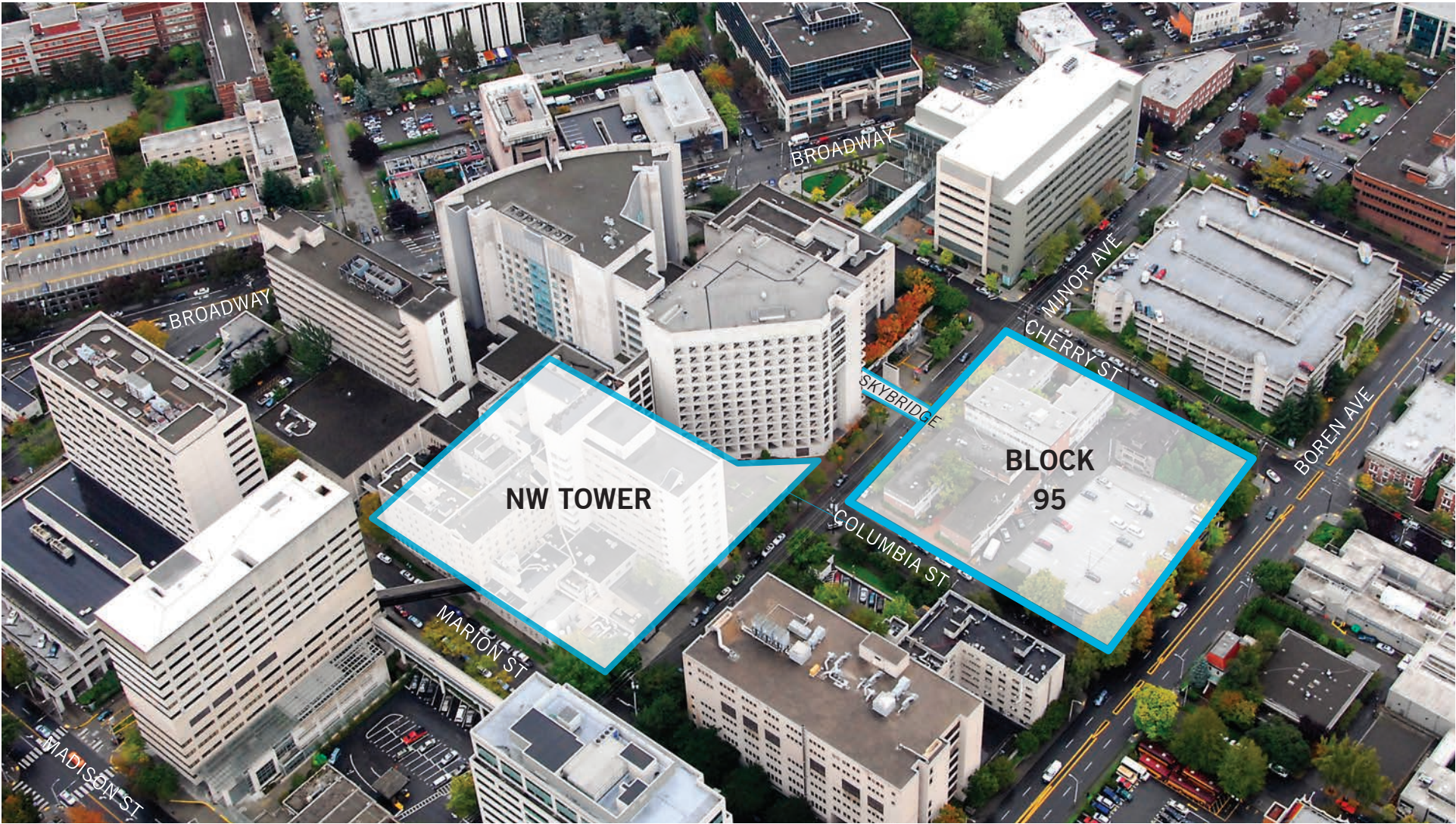
SKYBRIDGE NECESSITY

SKYBRIDGE DESIGN

PUBLIC BENEFITS

INTRODUCTION

SWEDISH FIRST HILL

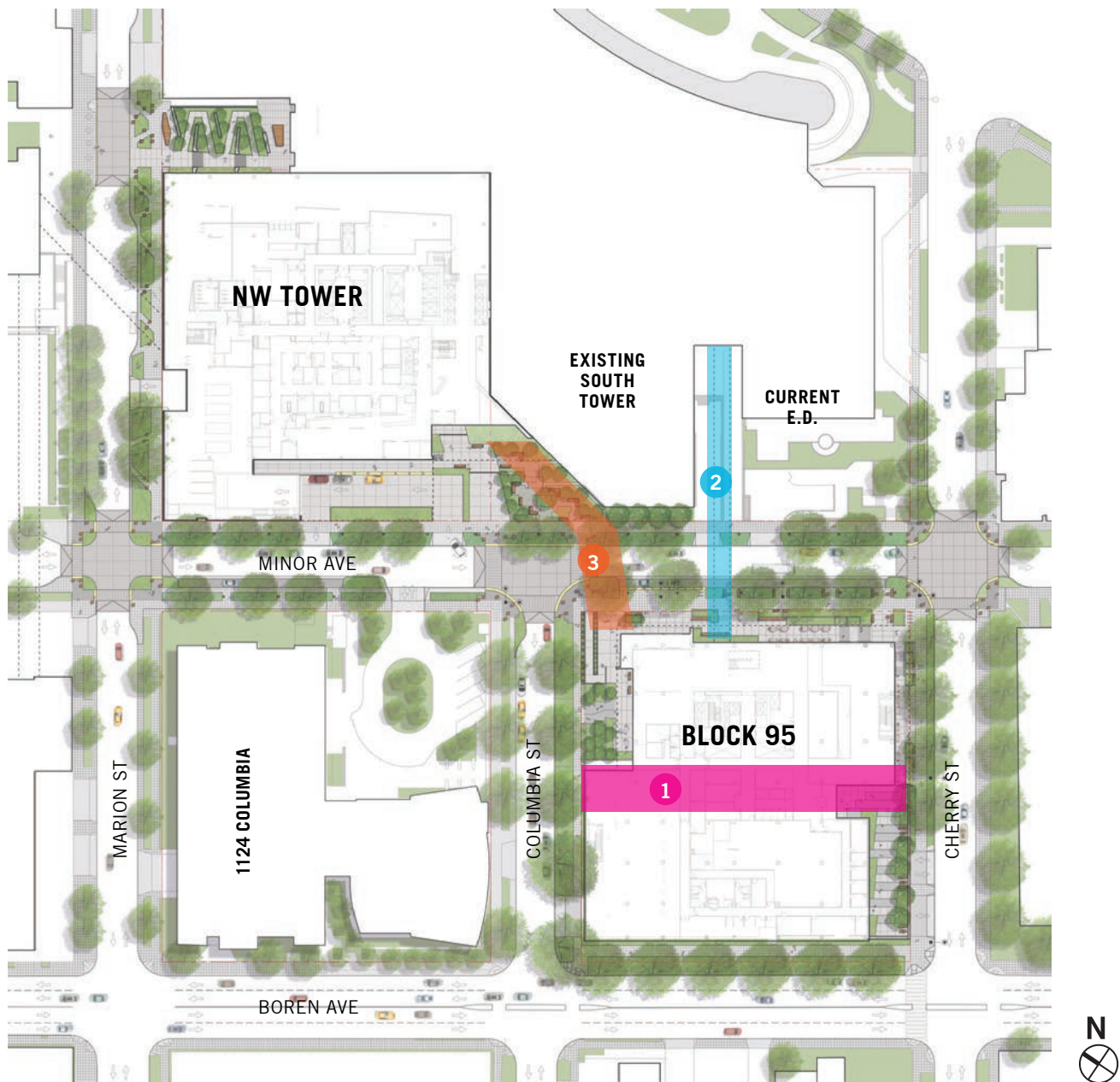


SWEDISH FIRST HILL



PROPOSED PETITIONS

- SDOT PETITIONS**
- 1 Block 95 Alley Vacation
 - 2 Minor Skybridge
 - 3 Minor Tunnel



SKYBRIDGE SCHEDULE

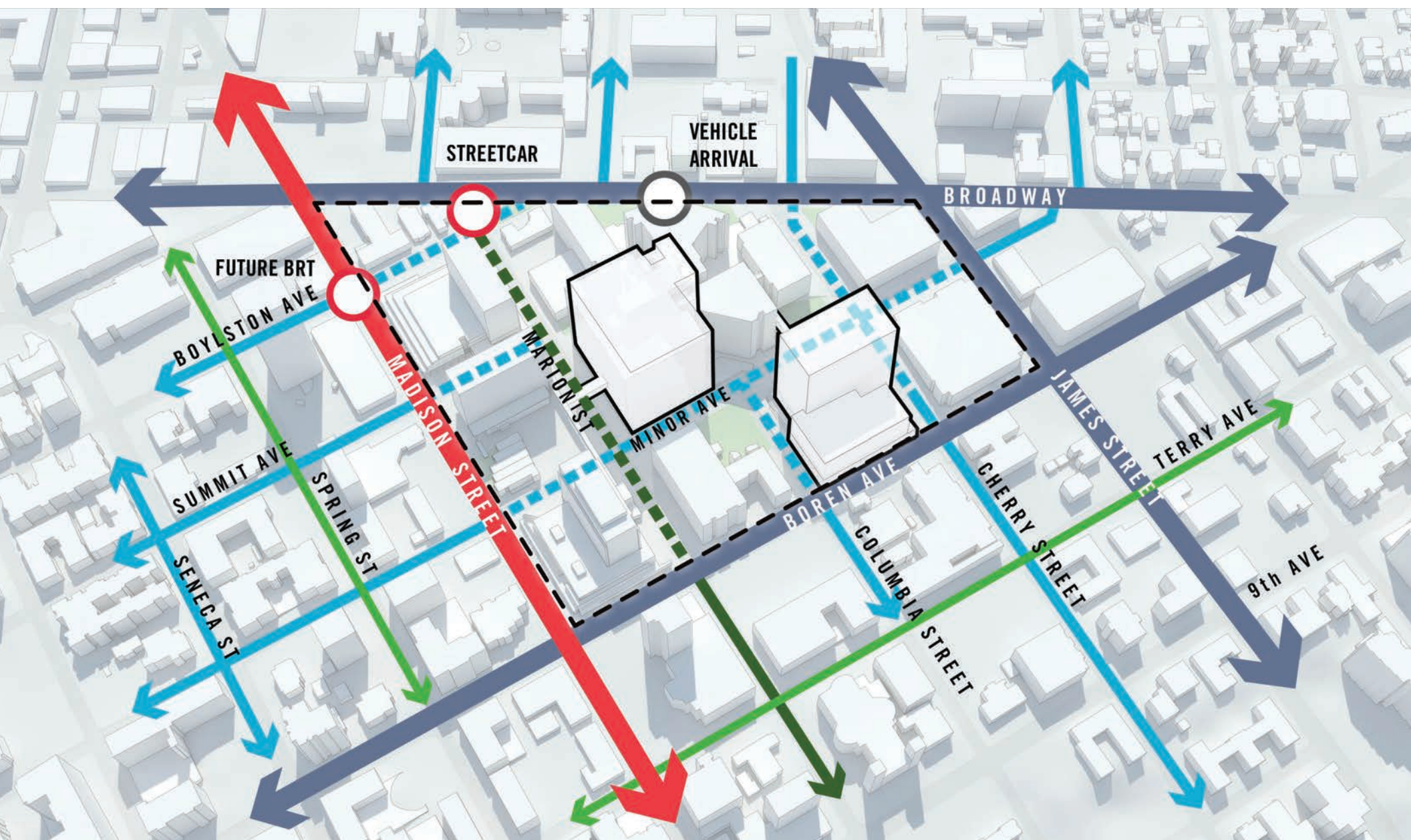
REVIEW MEETINGS

19 December 2015	Skybridge Review Committee
08 February 2015	Skybridge Review Committee Response
09 February 2016	Prep for Seattle Design Commission
03 March 2016	Seattle Design Commission Briefing
08 March 2016	Skybridge Review Committee
07 April 2016	Seattle Design Commission Review and Approval (pending)

NEIGHBORHOOD CONTEXT

- Shopping Street
- Arterial Street
- Green Street
- Neighborhood Greenway
- Neighborhood Street

SWEDISH FIRST HILL CONNECTIONS



NEIGHBORHOOD LANDMARKS AND CHARACTER



St James



8th Ave Hill Climb



Healthcare Community



Frye Art Museum



Sports and Recreation



Versatile Transit



Jefferson Terrace



Community Gardens



Multi-family Housing



Harborview Medical



Town Hall



O'Dea High School

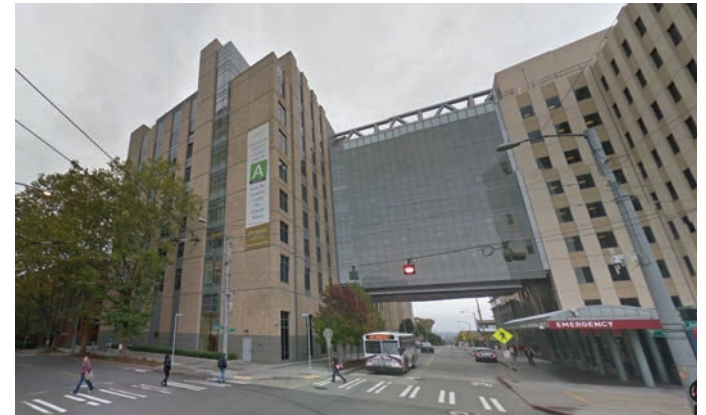
NEIGHBORHOOD EXISTING SKYBRIDGES



Existing Marion skybridge



Swedish Orthopedic skybridge



Harbor View skybridge

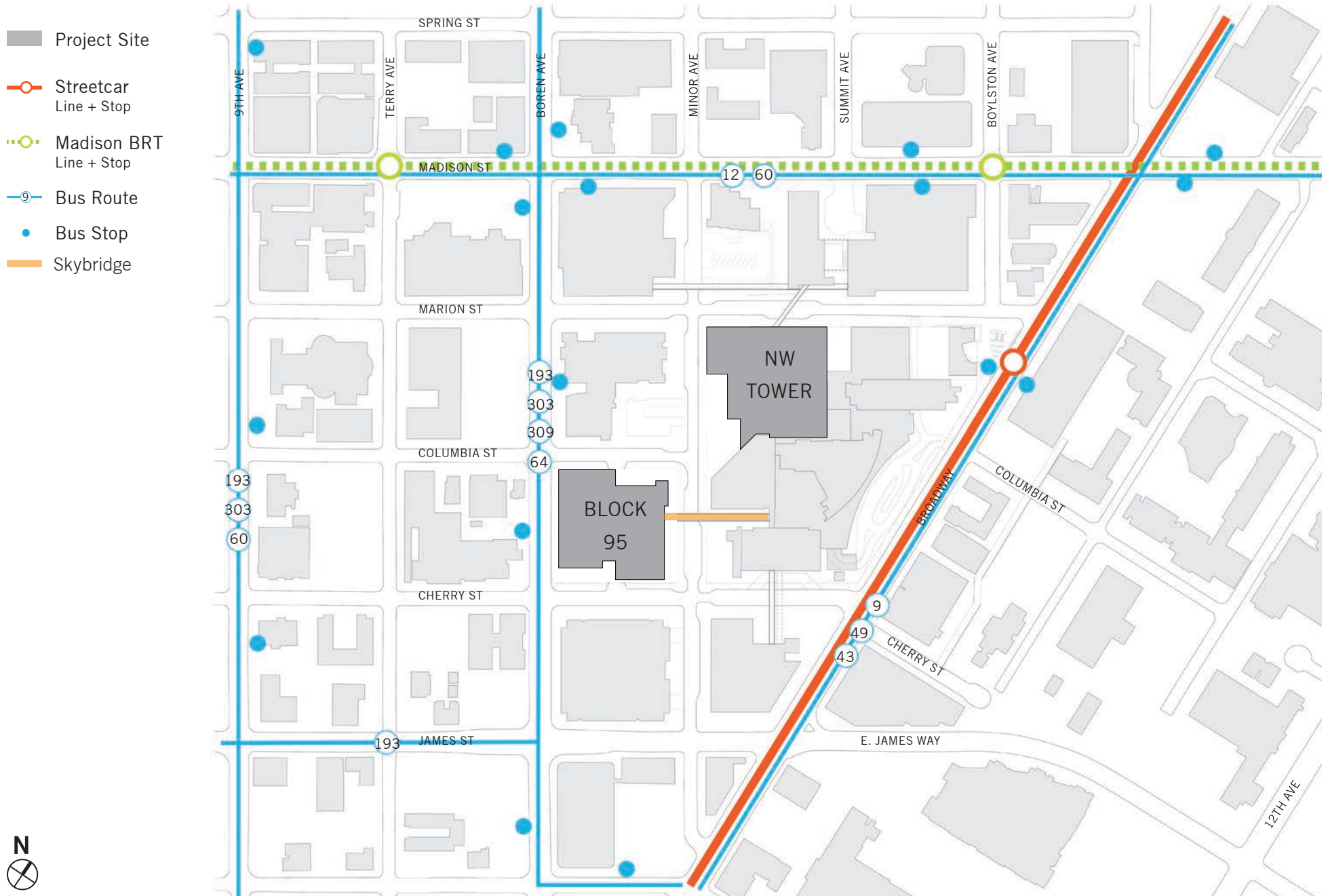


Existing Marion skybridge






East James way skybridge

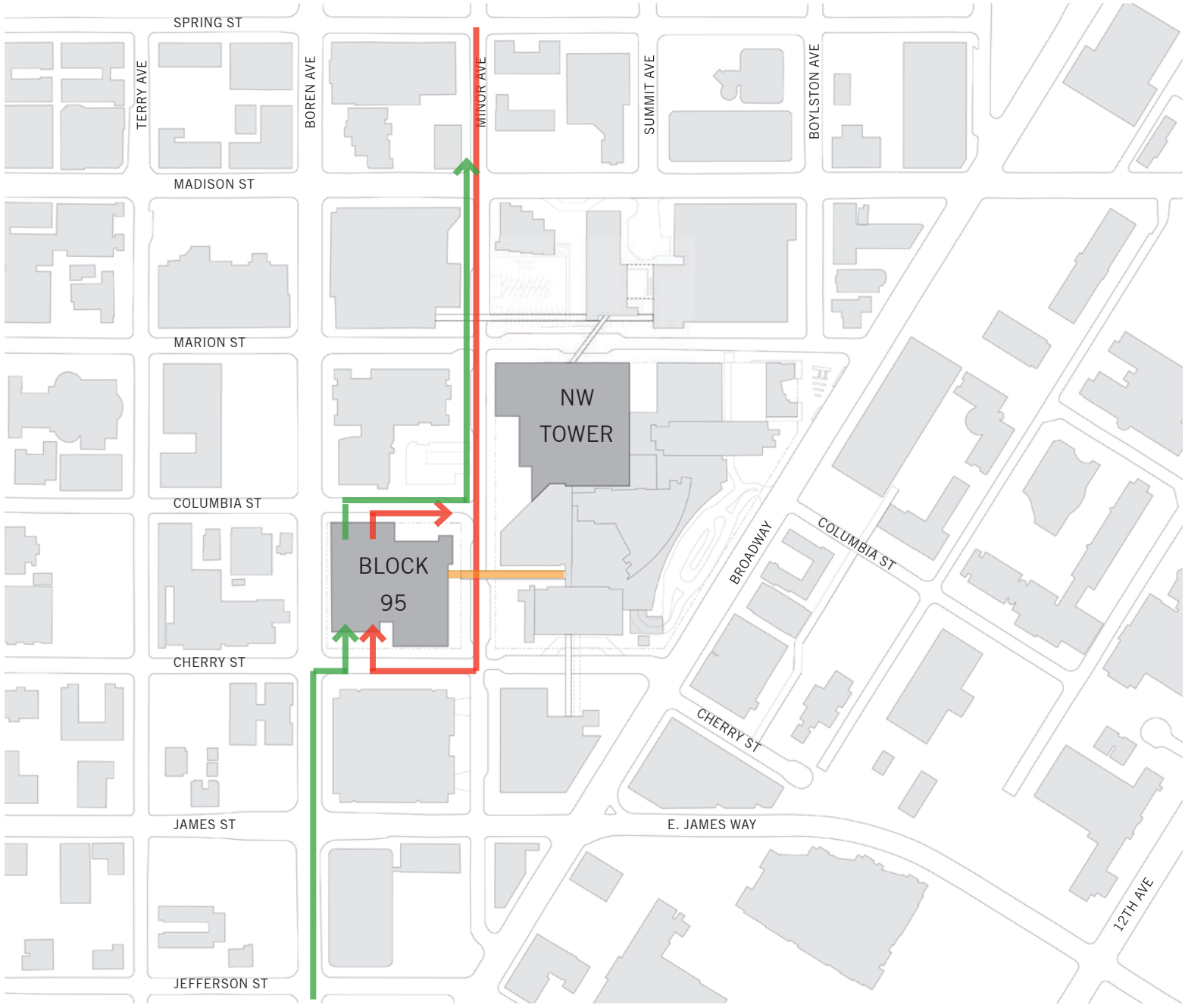
CIRCULATION/ PUBLIC TRANSIT



SERVICE ACCESS ROUTES

LEGEND

-  Larger Trucks
-  Smaller Trucks/Cars
-  Skybridge



EMERGENCY VEHICLE ROUTES

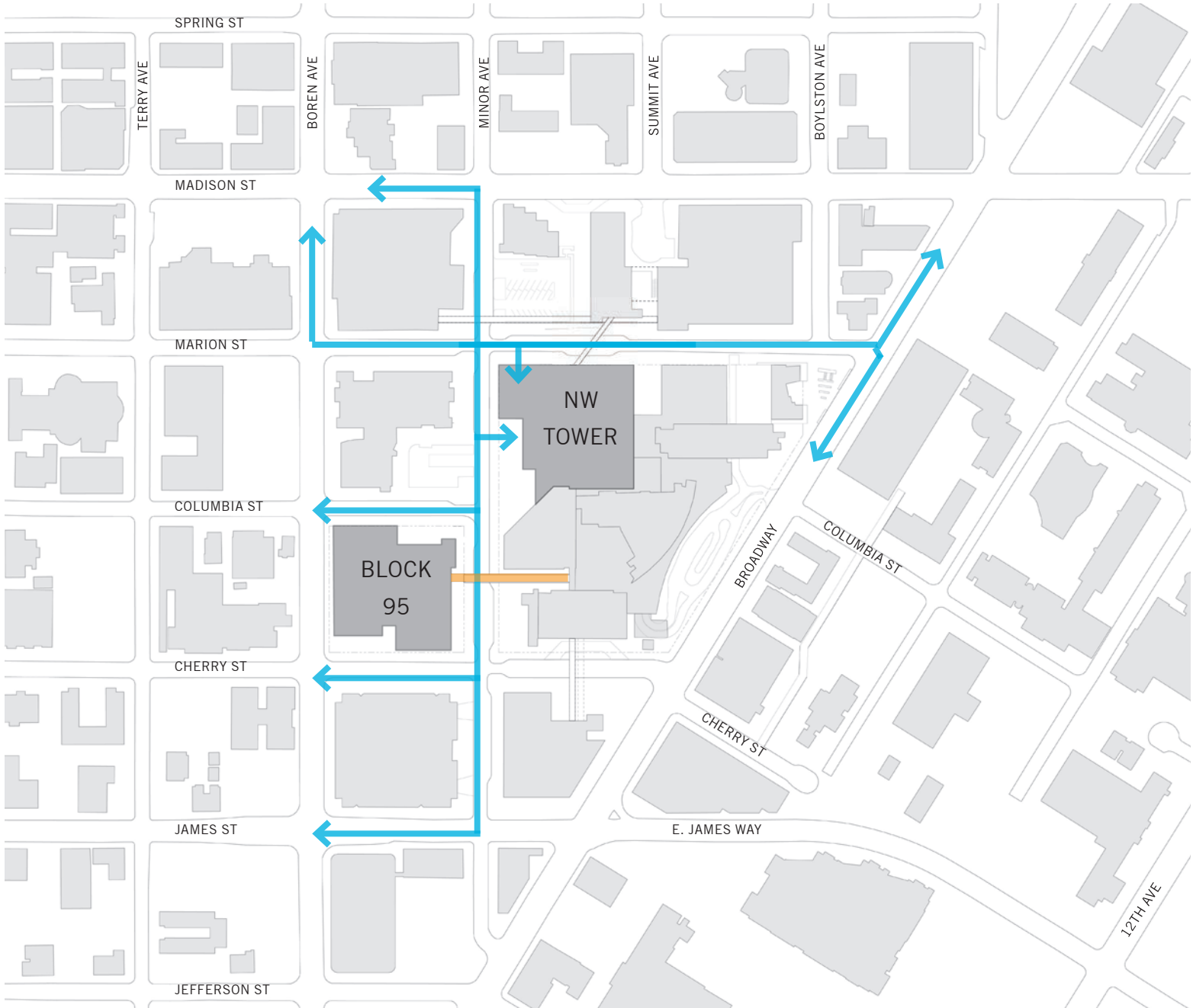
LEGEND



Emergency Vehicle Routes



Skybridge



VIEWS



Madison St



Marion St



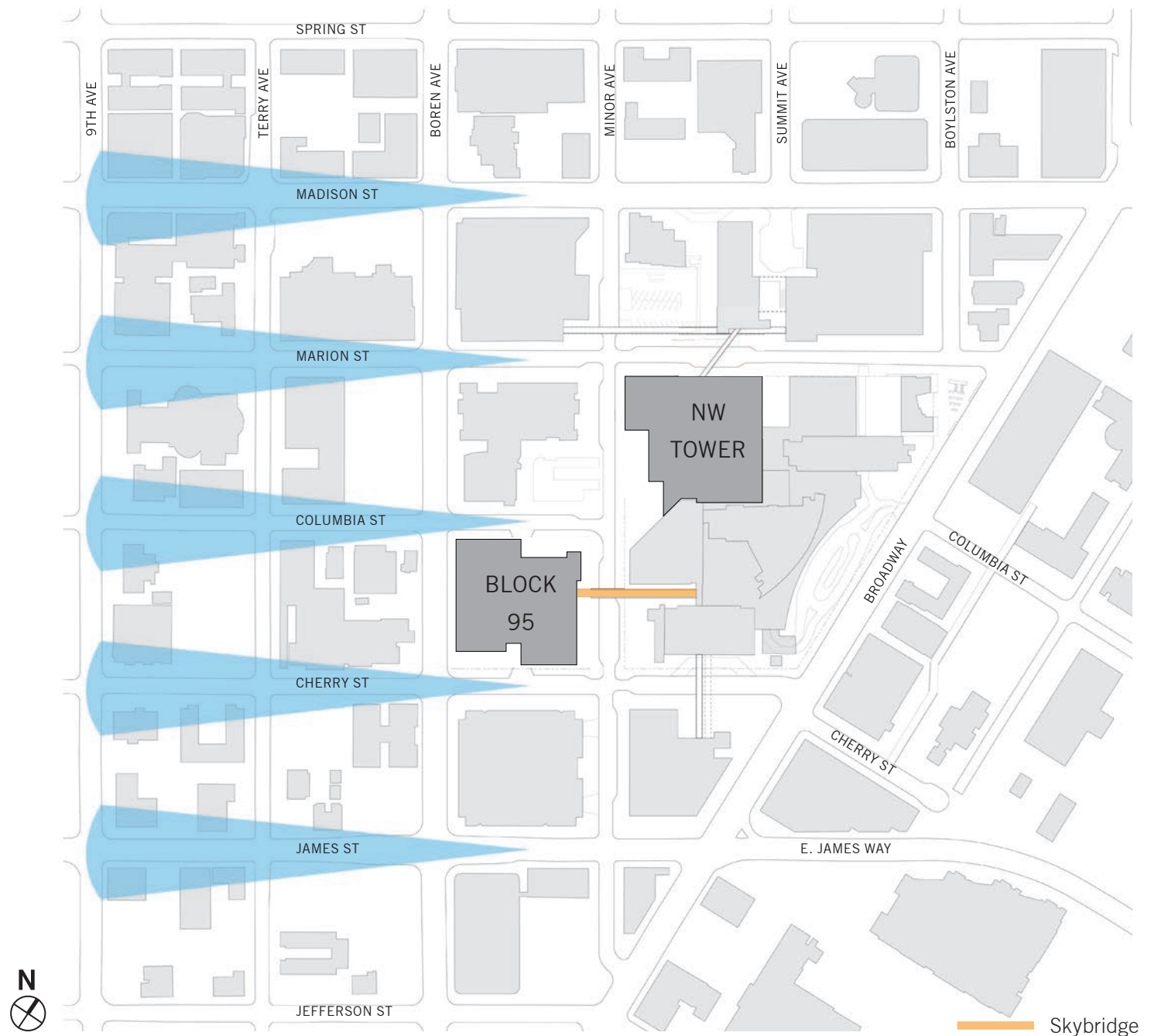
Columbia St



Cherry St



James St



 Skybridge

SKYBRIDGE NECESSITY

SKYBRIDGE

PURPOSE

Connects outpatient services with the main hospital

Clinics in Block 95 are for staff and patients specialty providers Swedish Hospital

Clinic patients visiting the clinics will frequently be pre/post hospital patients who are likely to be frail, or non-ambulatory, or immuno-compromised

Patients may visit clinics prior to surgery in the main hospital

Clinic patients may utilize diagnostic devices (CT and MRI) located in the hospital

Many of the doctors and staff who work in Block 95 clinics will also work in the main hospital

NEED

Approximately 1,200 users per day

460 crossings by patients (approximately 5% of whom are likely to be in wheelchairs) and family visitors per day

620 crossings by caregivers per day

Estimated 5 trips per week are hospital-based Code (rapid response) teams coming to the aid of clinic patients

Estimated 5 trips per week are likely to be patients requiring emergency transport to the main hospital

The MIMP separates the campus into a hospital zone and medical office support zone (less expensive construction). Block 95 is a medical support building, located across the street from a hospital zone which functionally support each other

SWEDISH FIRST HILL - BUILDINGS FUNCTION / PROGRAM

NORTHWEST TOWER PROGRAM

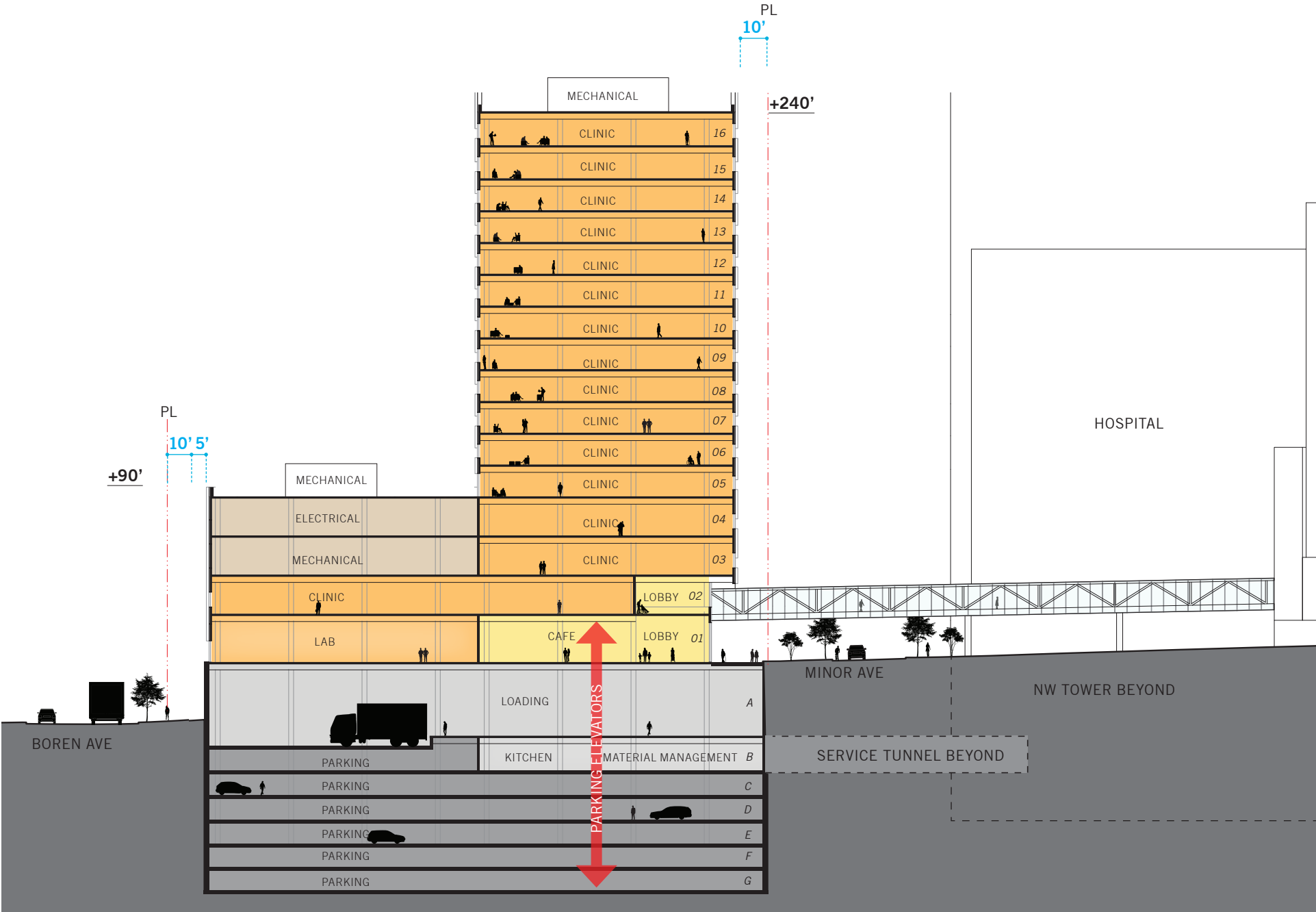
Surgery
Intensive care unit
Emergency Department
Inpatient Imaging
Dining
Registration
Pharmacy
Hospital Retail
Connection to rest of campus

BLOCK 95 PROGRAM

Clinics
Lab
Imaging
Cafe
Parking
Loading
Materials Management
Kitchen



SWEDISH FIRST HILL - BUILDINGS FUNCTION / PROGRAM



Building Section East-West Looking North


ALTERNATE TRAVEL ROUTES - NO SKYBRIDGE


Adds ambulance circulation to street

Effects pedestrian safety

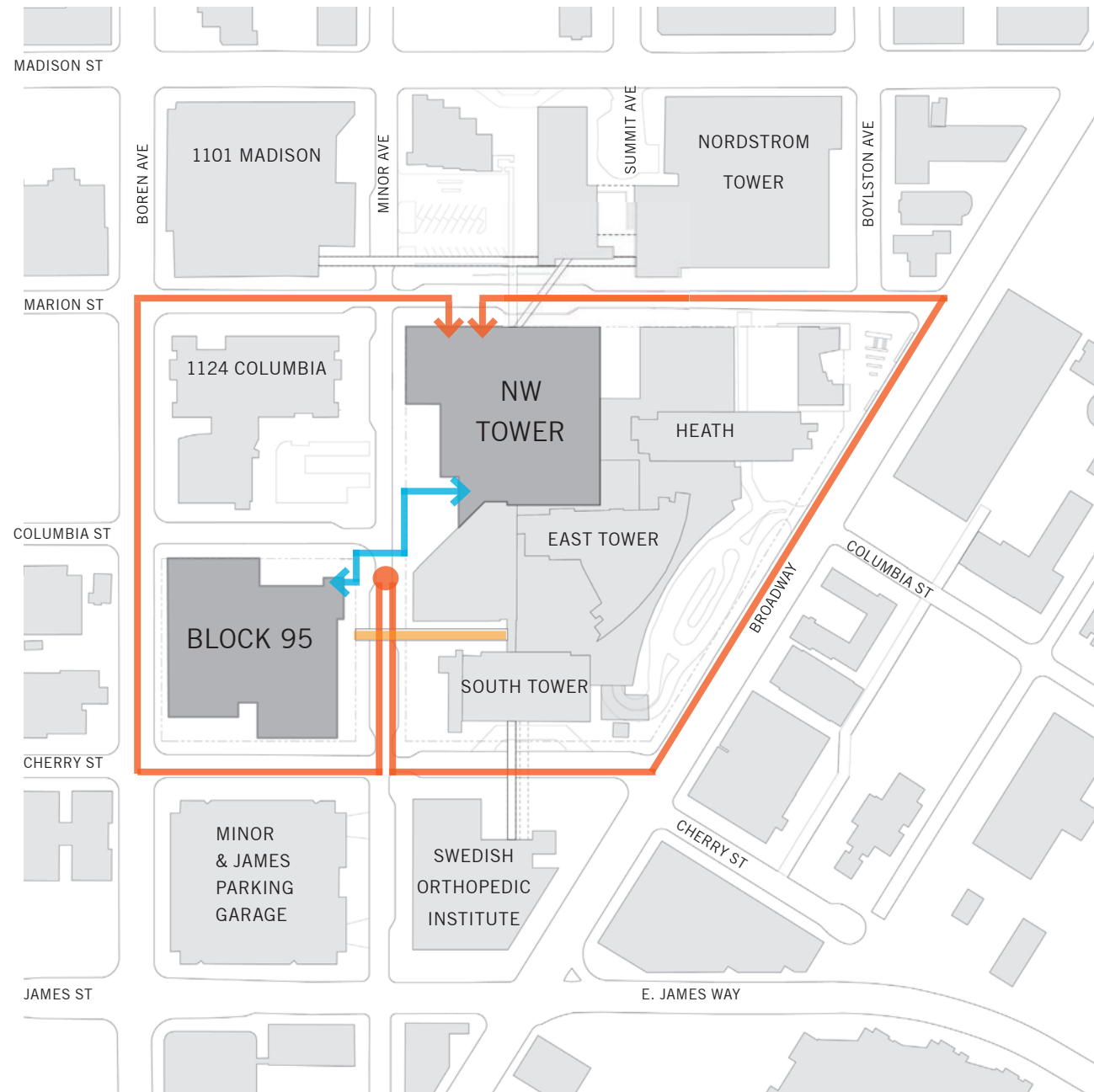
Added time for patient to receive required care

Adds circulation for patients staff and visitors during potential time sensitive procedures

 Circulation with Street Crossing Alternative

 Ambulance Route (for patients who cannot use street crossing)

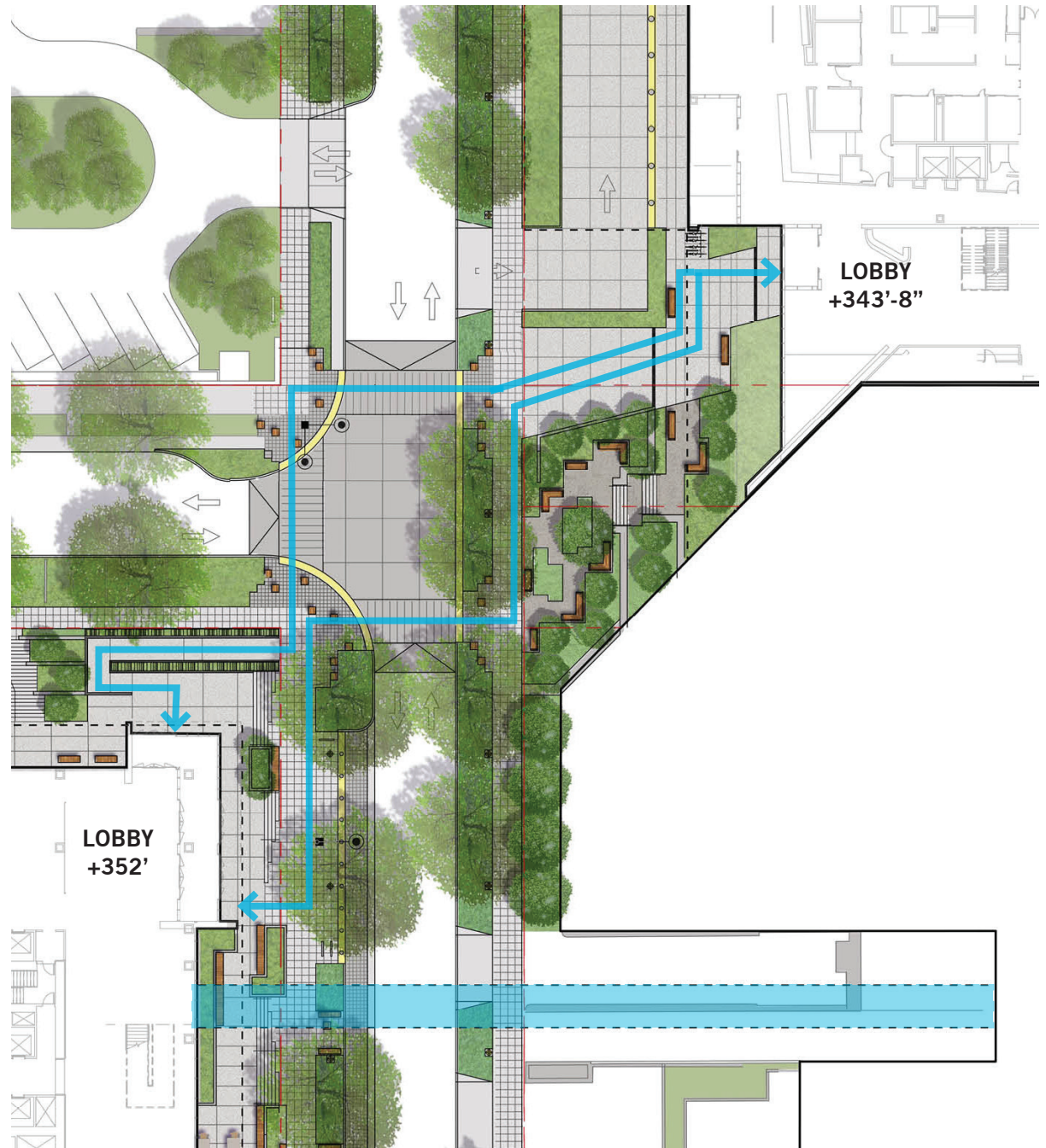
 Skybridge



ALTERNATE TRAVEL ROUTES - NO SKYBRIDGE

Requires patients with mobility issues to travel sloped and ramped surfaces, often in inclement weather.

Sidewalks have a 6% slope on Minor Avenue



GROUND LEVEL STREETSCAPE: B95 ENTRY

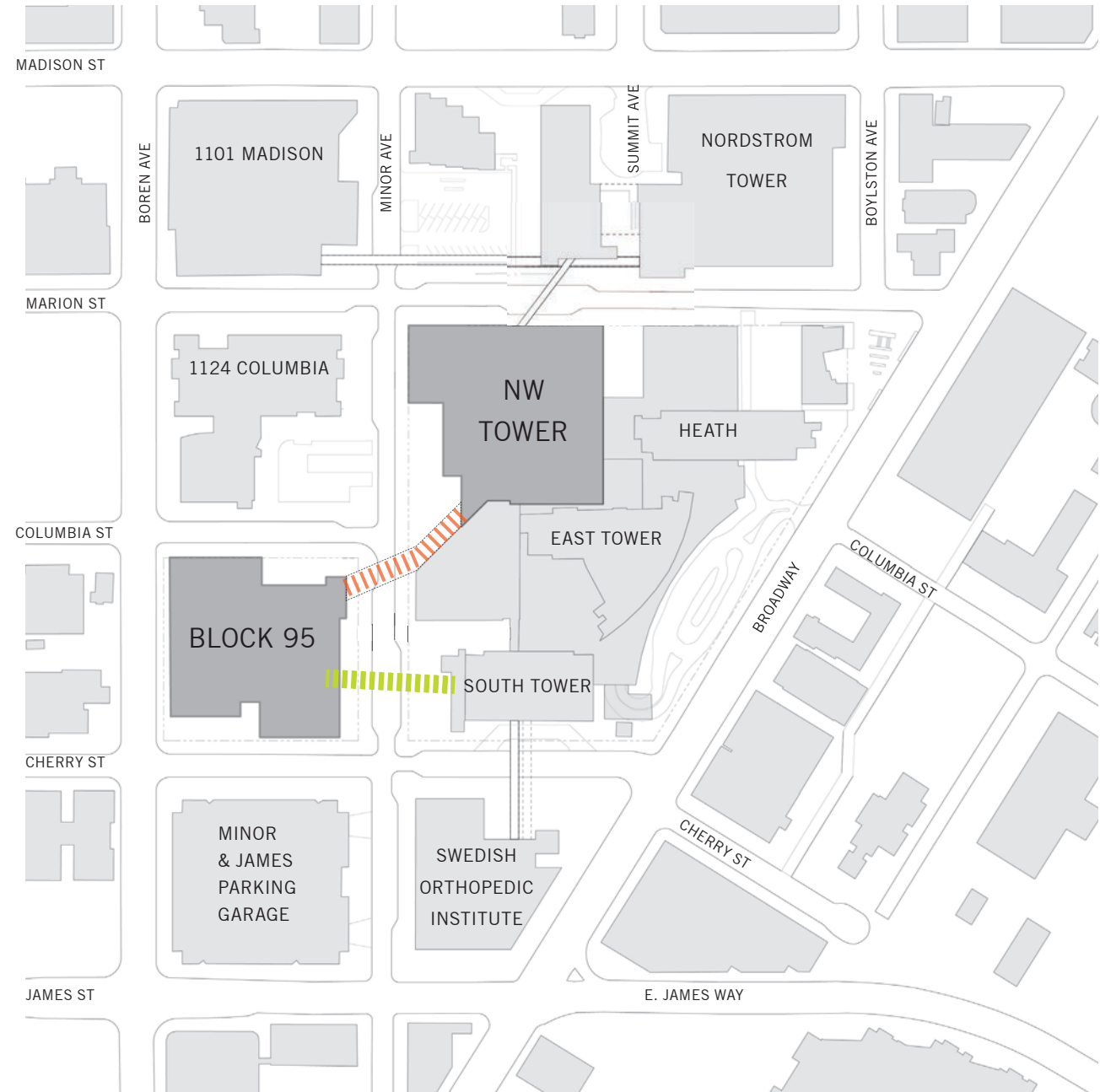
"Need to see the architectural design of the skybridges."



ALTERNATE TRAVEL ROUTES - TUNNEL

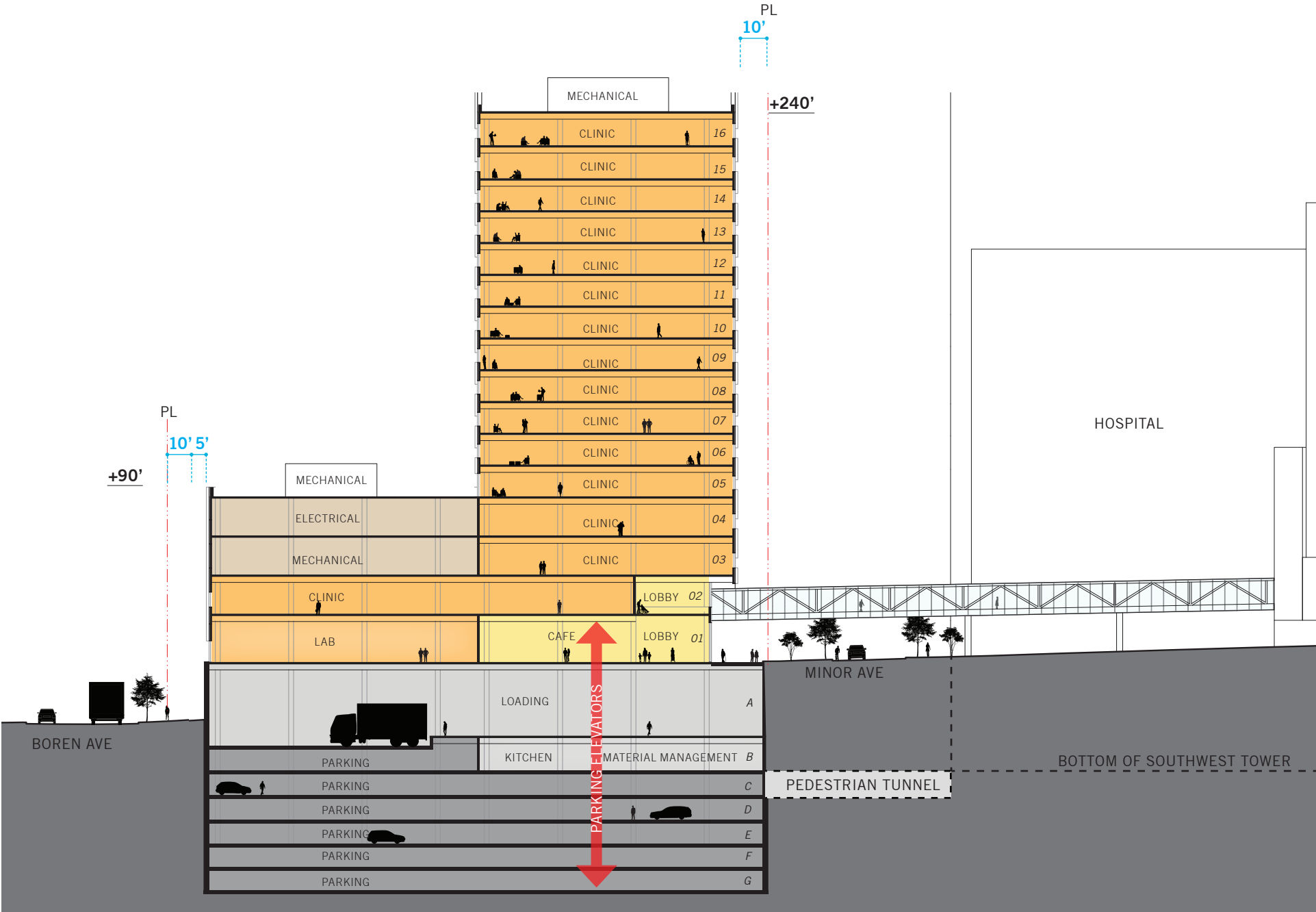
New service tunnel cannot accommodate pedestrian patient traffic

Tunnel alternative at South Tower would need to clear existing street utilities, making it lower than the deepest floor of the South Tower



- Service Tunnel
- Circulation with Tunnel Alternative

SWEDISH FIRST HILL - BUILDINGS FUNCTION / PROGRAM



Building Section East-West Looking North

SKYBRIDGE DESIGN

MINOR SKYBRIDGE - CODE REQUIREMENTS

Minor Avenue is a non-arterial street.

Minor Avenue is not a major truck route or freight corridor.

Bridge clearance requirements:

16.5 feet required from roadway surface to bottom of bridge.

Bridge will accommodate the largest truck serving the hospital, a WB-67 which has a standard height of 13'-6".

Bridge will accommodate the largest fire truck serving the hospital, a Duplex QS-100 which requires a vertical clearance of 11'-6".

EXISTING CONDITIONS

MINOR AVENUE



SITE PHOTOS

MINOR AVENUE



Existing Structure

Existing Structure

Minor Avenue Elevation *East*



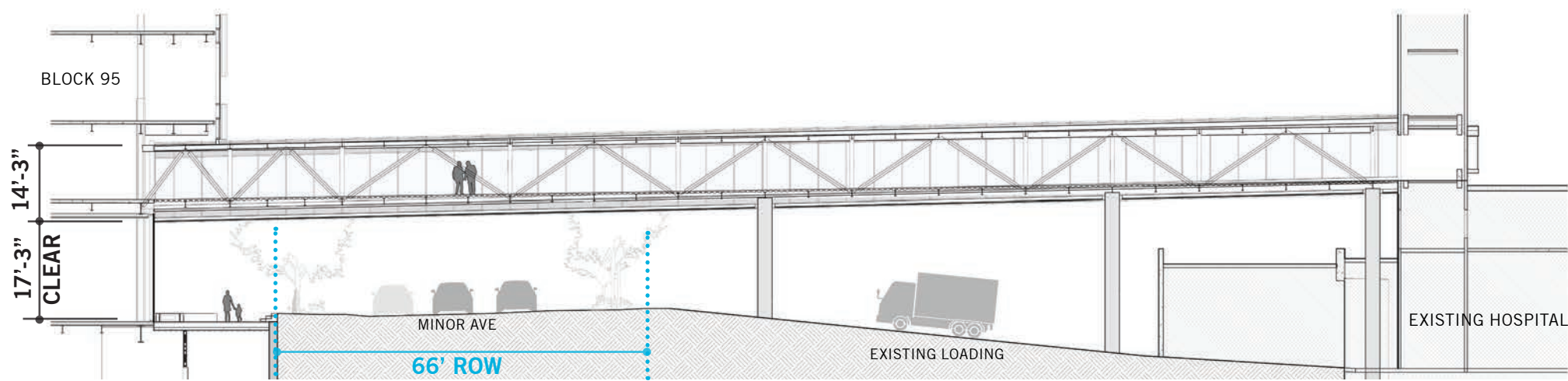
Minor Avenue Elevation *West*

SKYBRIDGE LOCATION

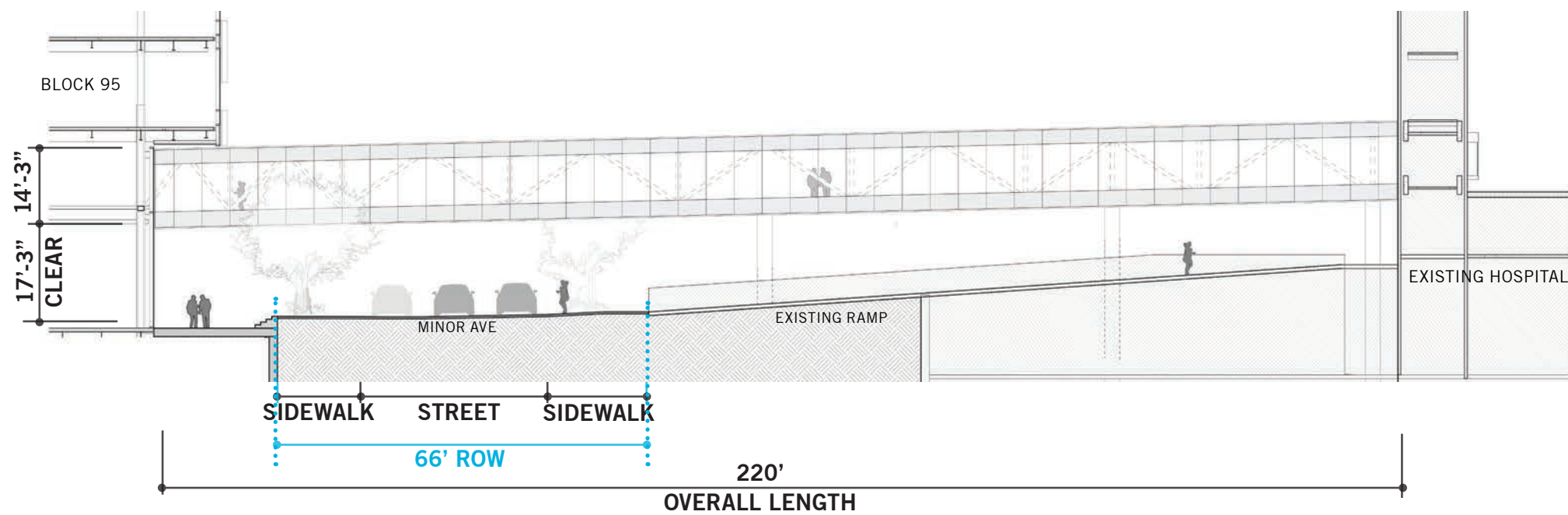
MINOR AVENUE



ELEVATION AND SECTIONS

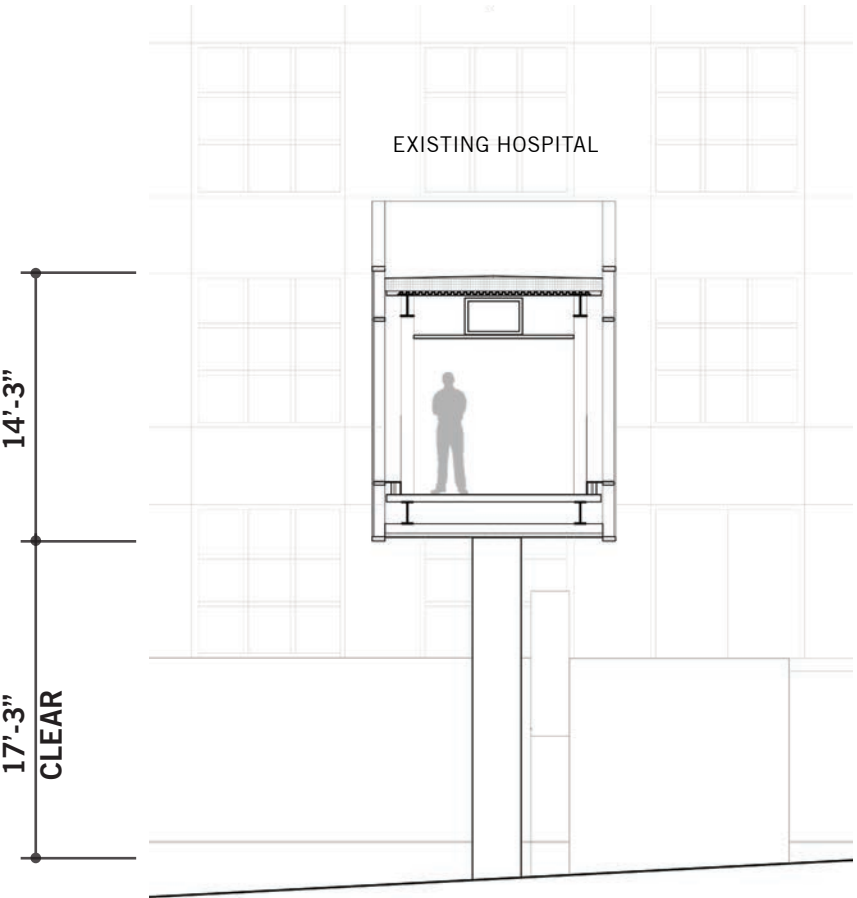


Skybridge Section looking north

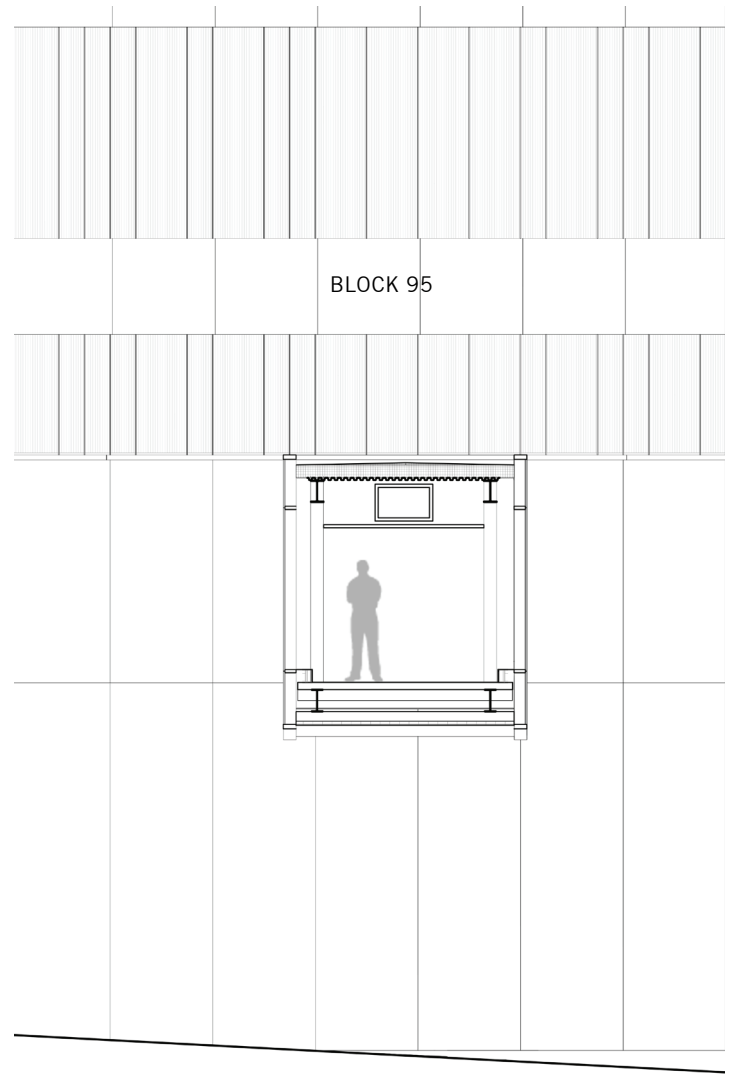


Skybridge Elevation looking north

ELEVATION AND SECTIONS

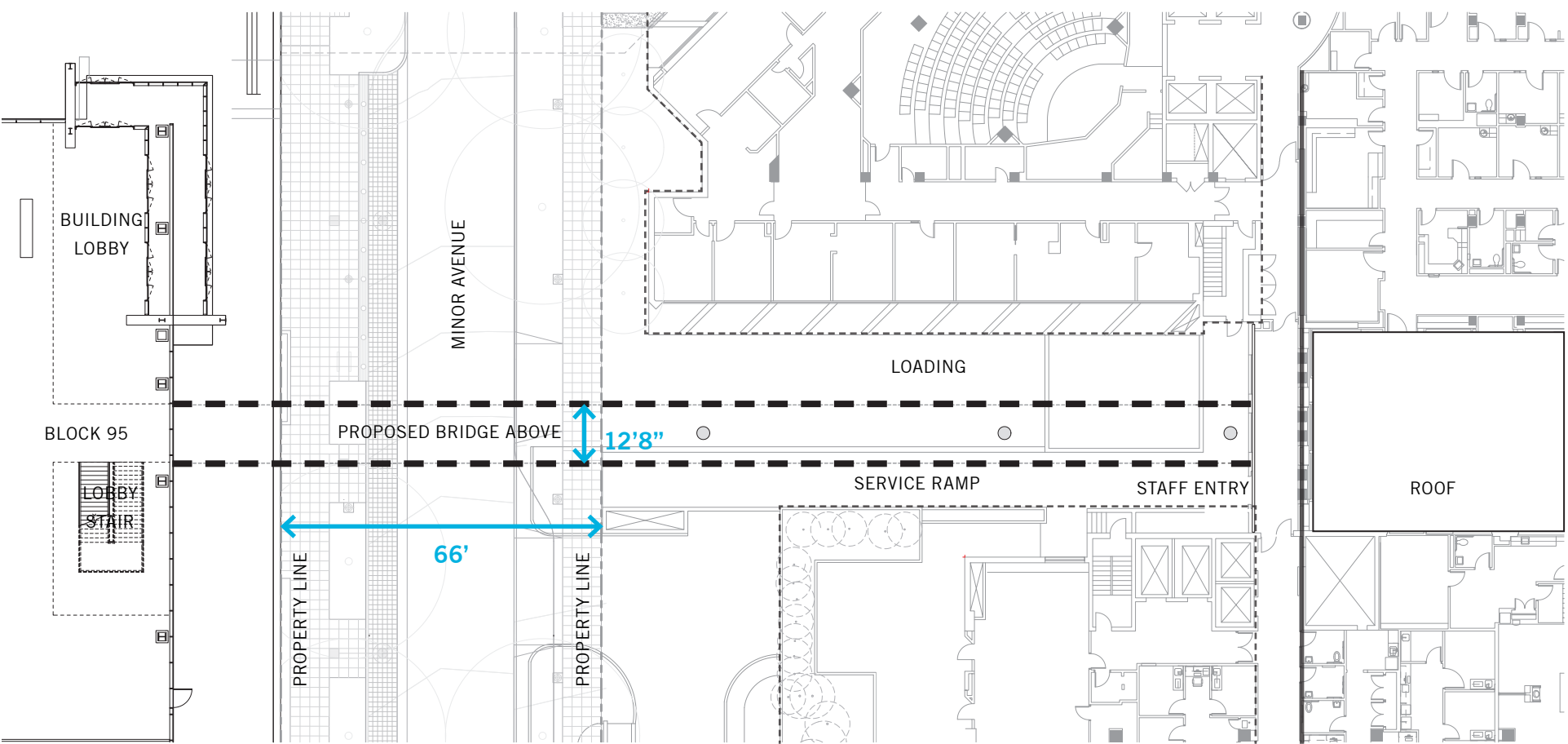


Section looking east

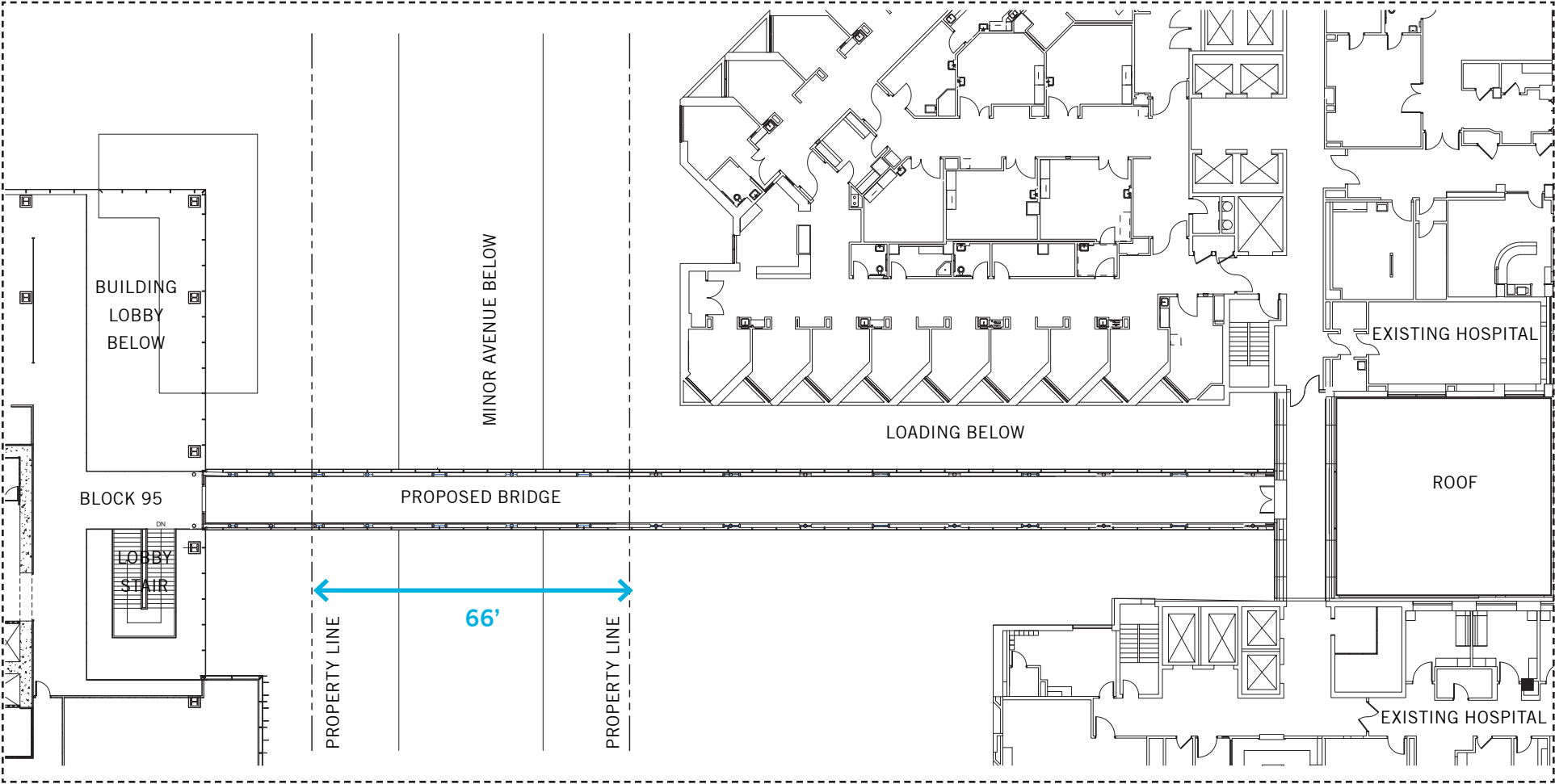


Section looking west

SITE PLAN (BELOW SKYBRIDGE)



BRIDGE PLAN (LEVEL 02)

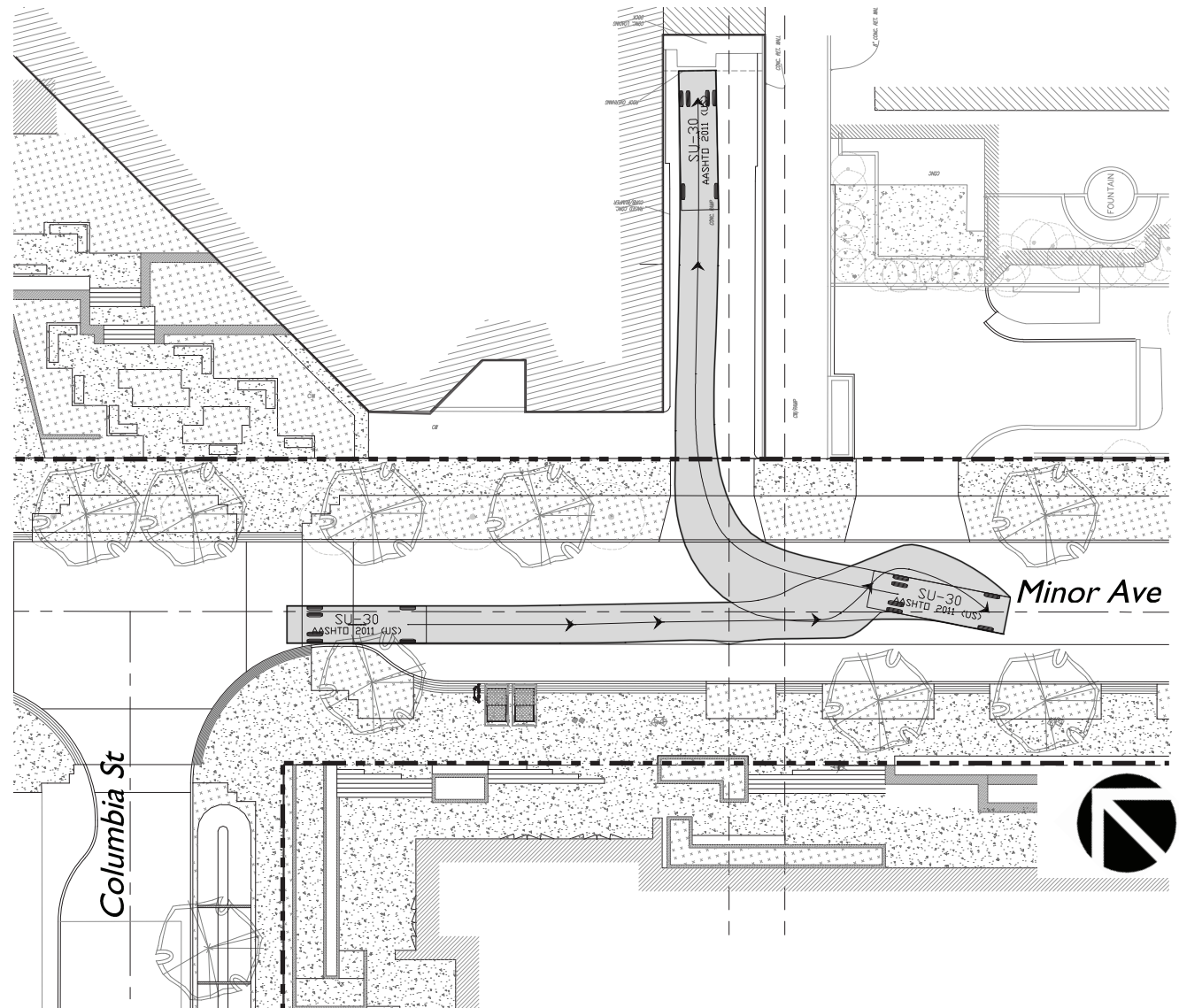


EXISTING LOADING

SU-30 Truck represents the average truck size that is accessing this dock.

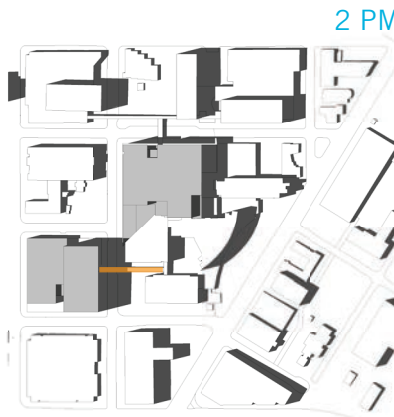
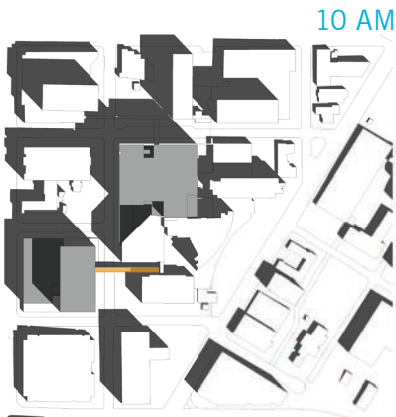
Pedestrian Lighting is provided from the buildings and sidewalk at the loading dock.

Trucks are part of Swedish services and can be scheduled to minimize pedestrian conflict.

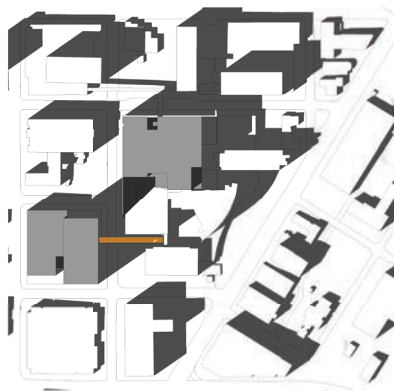
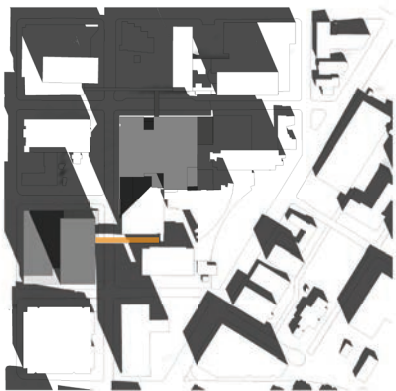


SOLAR STUDIES

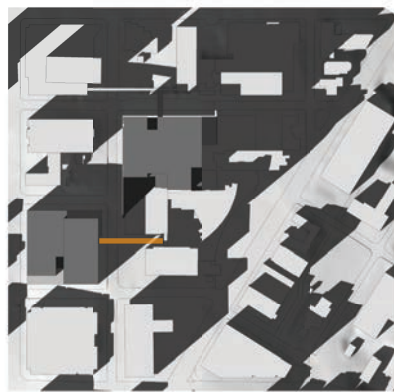
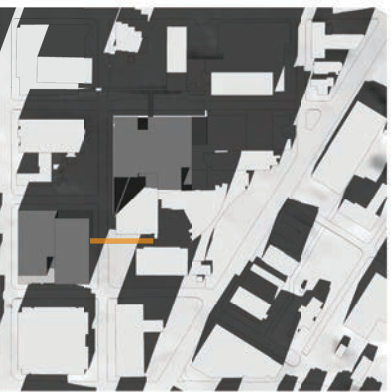
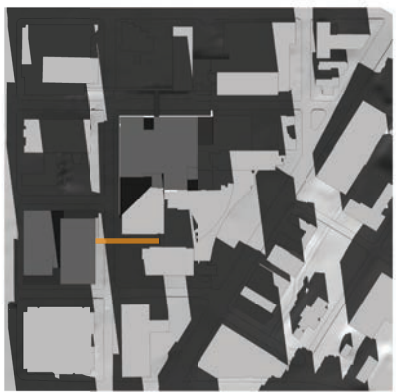
SUMMER SOLSTICE
(JUNE 21)



EQUINOX
(MARCH / SEPTEMBER 21)



WINTER SOLSTICE
(DECEMBER 21)



Skybridge



MINOR SKYBRIDGE

PERKINS+WILL

SiteWorkshop

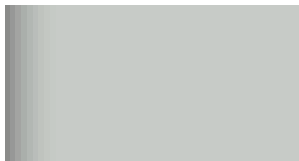
| Seattle Design Commission

| Skybridge Merit Review

| MARCH.03.2016 | 37

STREET VIEW LOOKING SOUTHWEST

“Need to see the architectural design of the skybridges.”



1 Vision Glass



2 Spandrel Glass



3 Mullions



4 Metal Soffit

PUBLIC BENEFITS

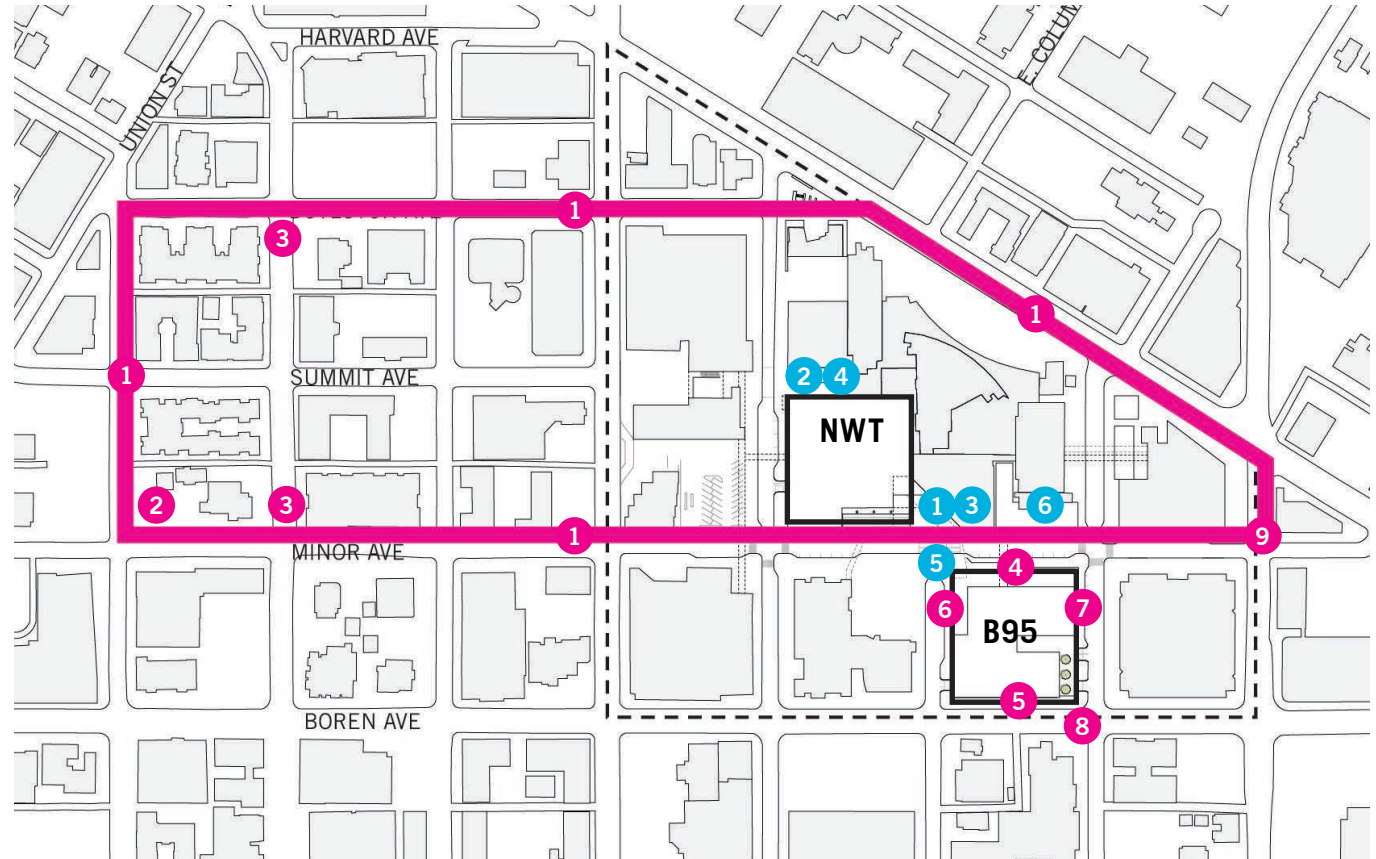
PUBLIC BENEFITS SUMMARY

BLOCK 95 ALLEY VACATION

- 1 The First Hill Mile
- 2 First Hill Park Funding
- 3 Public Art
- 4 Minor Ave Voluntary Setback
- 5 Boren Voluntary Setback
- 6 Columbia St ROW Enhancements
- 7 Cherry St ROW Enhancements
- 8 Boren & Cherry Ped Crossing
- 9 Minor & James Ped Crossing

MINOR AVE SKYBRIDGE

- 1 Minor Ave Garden
- 2 Marion Ave Garden
- 3 Public Art - Minor Ave Garden
- 4 Public Art - Marion Ave Garden
- 5 Minor & Columbia Raised Intersection
- 6 Minor Ave ROW Enhancements



B95 ALLEY VACATION PUBLIC BENEFITS



1 The First Hill Mile



4 Minor Ave Voluntary Setback



5 Boren Ave Voluntary Setback



8 Boren & Cherry Ped Signal



9 Minor & James Ped Signal



2 First Hill Park Funding



3 Public Art Along Mile



6 Columbia St ROW Enhancements



7 Cherry St ROW Enhancements

MINOR AVE SKYBRIDGE PUBLIC BENEFITS



1 Minor Ave Garden



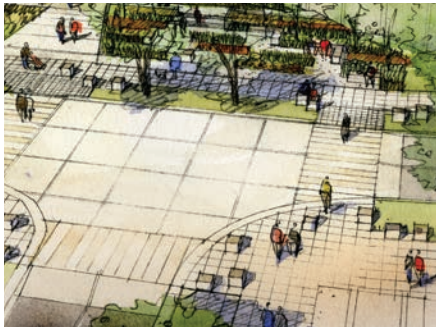
2 Marion Ave Garden



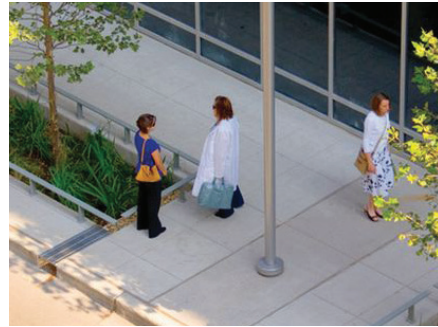
3 Minor Ave Garden Public Art



4 Marion Ave Garden Public Art



5 Minor & Columbia Pedestrian Crossing Improvements



6 Minor Ave ROW Enhancements